



Windmill Field, Windlesham

£350,000



Windmill Field, Windlesham, Surrey

Two bedroom terraced house in Windlesham within walking distance of village shops, local park and is being sold with no onward chain.

FEATURES

- Ideal buy to let or first time buy
- Modern estate
- No onward chain
- Currently let – tenancy ends 29th May
- South westerly facing garden
- Gas central heating

ACCOMMODATION

- Entrance hall
- Sitting/dining room
- Fitted kitchen
- Stairs and landing
- Two bedrooms
- Upstairs bathroom

OUTSIDE

- Residents parking
- Rear garden with patio
- Garage in block

EPC RATING

C





Approximate Gross Internal Area 55.27 sq m / 594.92 sq ft
(Excluding Garage)
Garage Area 12.37 sq m / 133.14 sq ft

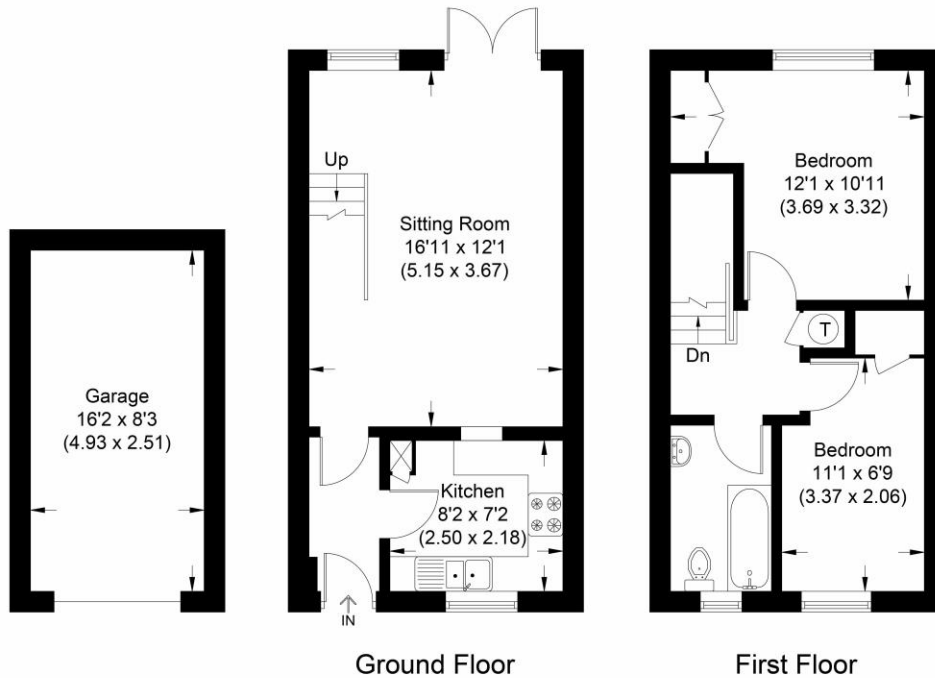


Illustration for identification purposes only,
measurements are approximate, not to scale.

Disclaimer: We wish to inform prospective purchasers that we have prepared these sales particulars as a general guide. We have not carried out a detailed survey, nor tested the services, appliances and specific fittings. Room sizes are approximate and rounded; they are taken between internal wall surfaces and therefore include cupboards / shelves, etc. Accordingly, they should not be relied upon for carpeting, curtains / blinds and kitchen equipment, whether fitted or not, are deemed removable by the vendor unless specifically itemized within these.

Postcode for sat nav: **GU20 6QD**



The Old Dairy, 7 Updown Hill, Windlesham, Surrey GU20 6AF
enquiries@newtonrowe.co.uk | 01276 986900